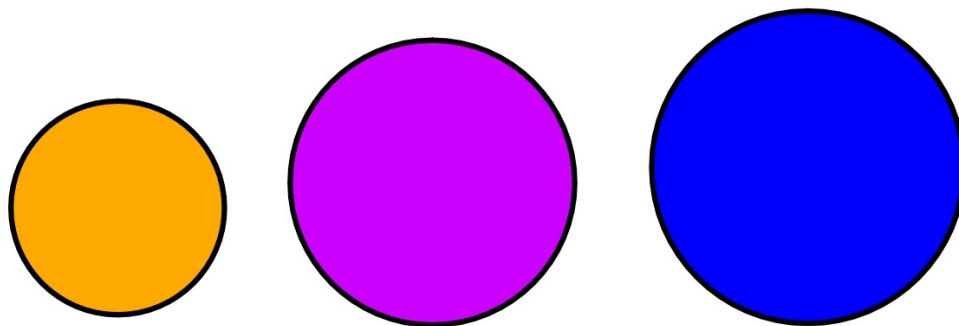
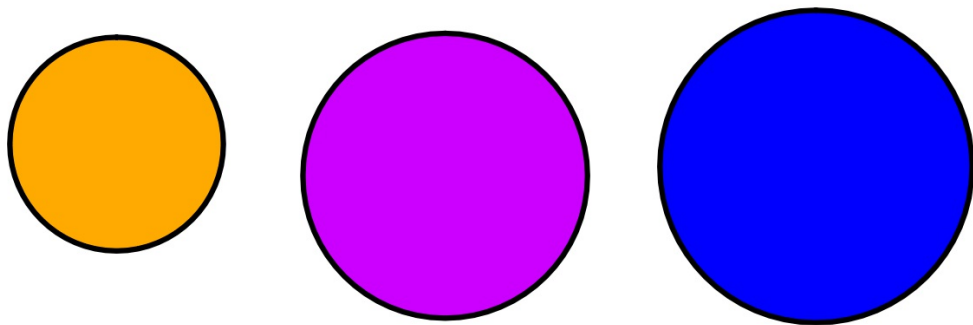


Creating a Background

1. Resource Browser 
2. Insert Your Own Media/Image
3. Copy and Paste

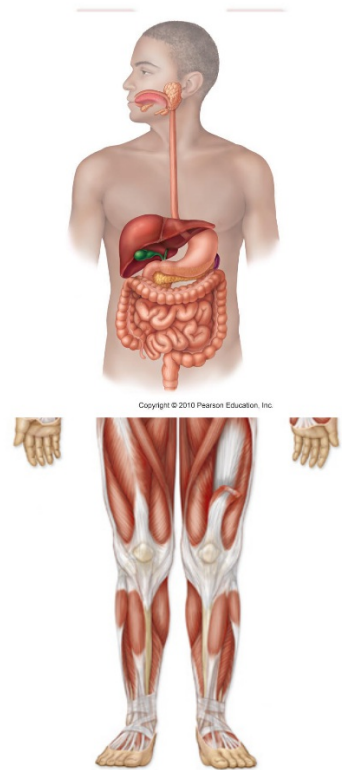
.

How to Order / Arrange Objects



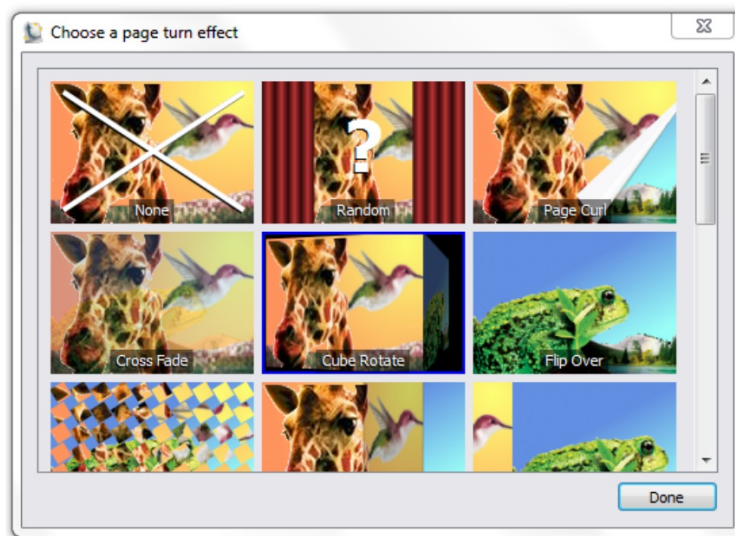
Why Do I want to do that???

Mystery
Box



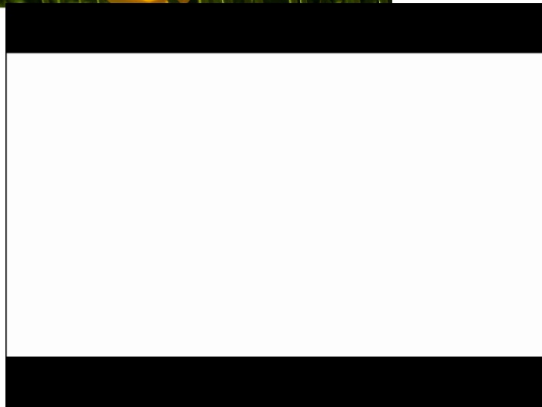
Page Turn Effects

I. View --> Page Turn Effects



Inserting Media

Images



Videos



Inserting Links

1. Direct Hyperlink (INSERT-->Link)


2. Linking an Image or Other Media

The logo for 'educreations' is displayed in a grey rectangular box. The word 'educreations' is written in a lowercase, sans-serif font. 'edu' is in blue, and 'creations' is in grey.

****If you make a mistake (wrong link, etc.), right click on your image and select REMOVE EXISTING. Then, go back and fix your link.**

a. Insert the image.

b. Select RESOURCE BROWSER from the Toolbar. 

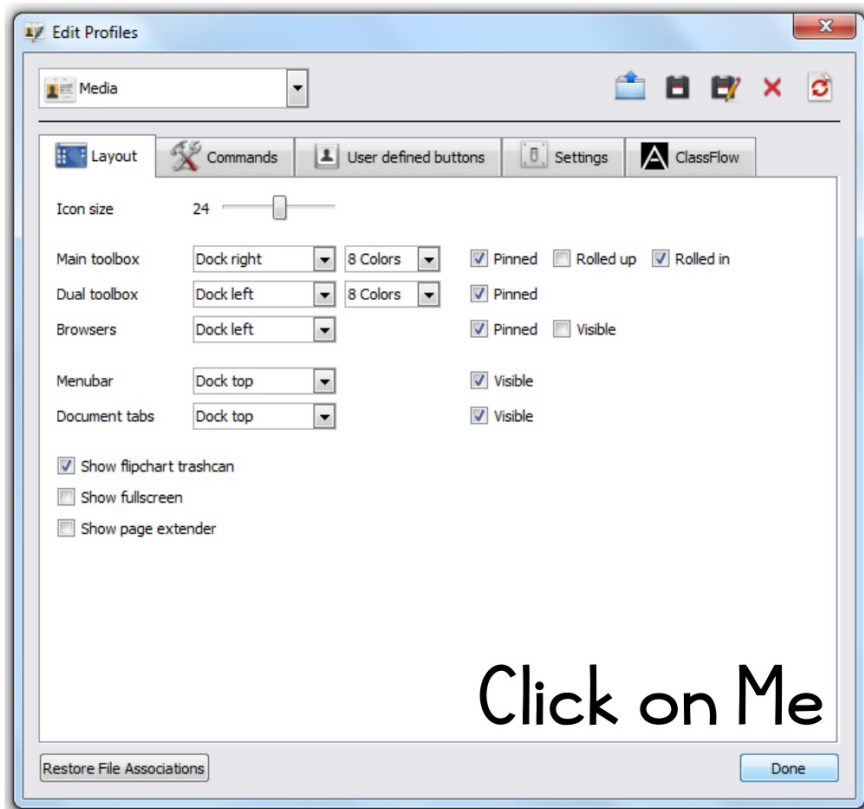
c. Select the ACTION BROWSER at the top 

d. Current Selection drop down menu select DOCUMENT/MEDIA actions.

e. You choose to open a website or a document

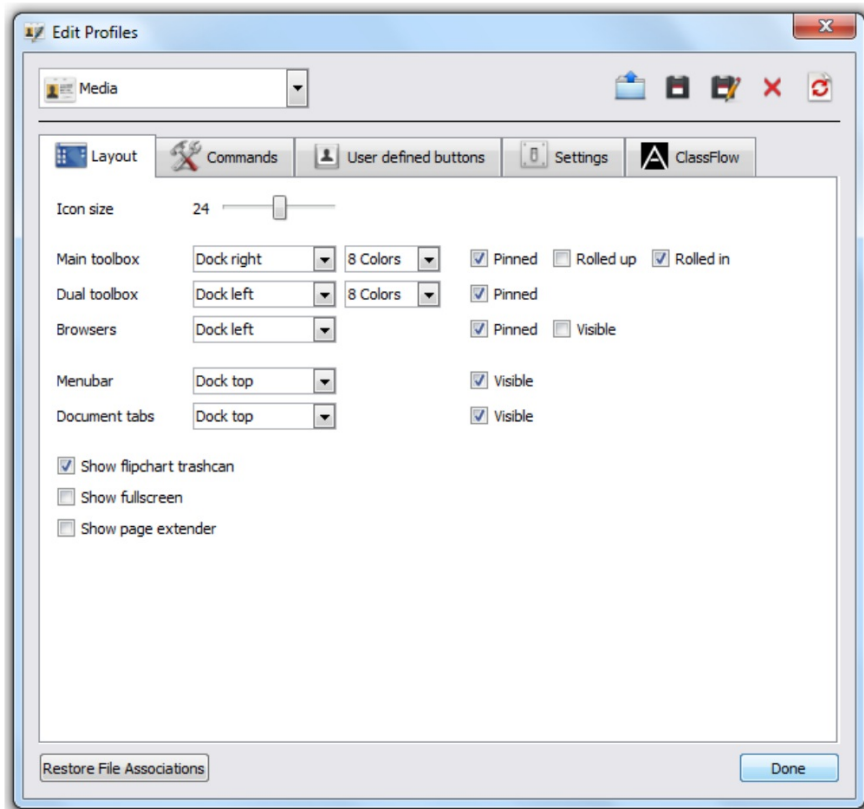
f. Click APPLY CHANGES

Changing Your Layout



Click on Me

Modify Your Settings



Promethean Planet

